



The Retired Educator

Volume IX

October 2006

Issue 2

THE RETIRED EDUCATOR

Published By

Orange County Retired
Educators Association
P.O.Box 667325
Orlando, Florida 32867

President
Carol Egolf

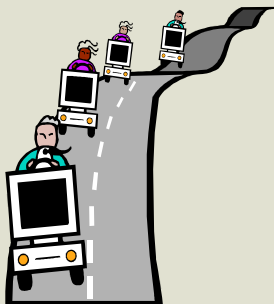
Vice-President
Frank Johnson

Recording Secretary
Shirley Pettit

Corresponding Secretary
Eleanor Kenyon

Treasurer
Robert Ford

Editorial Team
Mildred Dunlap
&
Sue Orth



We're on the Web!

Visit us at:

www.ocrea-fl.org

PRESIDENT'S CORNER

The money I pay for OCREA/FREA membership is the best \$40 I spend all year. Let me share some ideas to help you persuade a friend to join.

1. We organize group excursions for cultural activities, e.g., plays, museums, even a cruise or two.
2. We contribute to scholarship funds for future teachers. There is a state foundation, and we are working toward a local scholarship also.
3. There are Medicare supplements & long-term health care insurance programs planned for us retired educators.
4. Legislative teams monitor any bills affecting retirees. Particular attention is paid also to the FRS Trust Fund.
5. Do you receive a Health Insurance Subsidy? Do you know that HIS money is given to us now because of the perseverance of an FREA lobbyist?

Here is MY reason for joining, and I think it is the biggest reward of membership. Two former colleagues told me it was FUN. I still see my longtime friends, and I have made many new "best friends".

At the September meeting a challenge was issued to bring new members to the October & November gatherings. A gift card (which will afford an opportunity for FUN with your pal) is waiting for YOU. I am looking forward to adding your friend to my "best buddy" list.

Carol Egolf

OCREA LEADERS

FREA and DISTRICT

In addition to the great local leaders we have in OCREA, many of our members serve FREA in the following categories.

State representation: Robert (Bob) Ford serves as Member-at-large on the Nominating committee and Mildred Dunlap as Health Care chairman.

District VIII {comprised of Seminole, Brevard, Orange, Osceola, Polk and Lake Counties} representation: Ann Winn is Director and Bylaws Committee chairman, Ruth Ford serves as Membership chairman, Mildred Dunlap as Legislative chairman and Margie Wells as Public Relations chairman.

Ellen James serves as Trustee for District VIII on the Florida Retired Educators Foundation, Inc

GENERAL MEMBERSHIP MEETING

Thursday, October 5, 2006

College Park United Methodist Church
(located at corner of Edgewater & Harvard across from Publix)

10:00 a.m. Continental breakfast & Social hour

10:30 a.m. Program and Business

PROGRAM: Legislative candidates

Hosts & Hostesses:

Members with last names beginning with A-C

PLEASE PLAN TO ATTEND!

Due to limited parking, please carpool if possible.

Credit Union News

By Mary Lynn Williams

College CFE Sponsors 2006 Grant Winner

Brandi George, a 2006 graduate of William R. Boone High School, has been selected to receive a \$5,000 college grant in the Education Exchange College Grant program. Through her impressive academic achievements, she earned the prestigious designations of the National Honor Society, Spanish Honor Society and Math Honor Society. She is also an accomplished gymnast who has been captain of her gymnastics team for the past 2 years.

Brandi will attend the University of Maryland beginning this fall and though she is undecided as to what her major course of study will be, we wish her continued success in whatever she chooses. Winners in the Education Exchange College Grant program are selected for their outstanding academic achievement, community service and answers to essay questions. Congratulations, Brandi!

LITERACY NEWS

Are you spending time participating in reading activities reading with, for and by students, both old and young? Tally those hours on the form below and bring them to the October meeting or send them to:

Henrietta Sebag

NOT AVAILABLE ON WEB VERSION

Orlando, FL 32828-5457

LITERACY HOURS

Name _____
Month(s) _____

Tutoring _____
Libraries _____
Schools _____
Miscellaneous _____

of hours from the above **total** that benefited young people: _____

OUT OF TOWN?

This form is available on our website for you to fill out, print and send.

In Memoriam

Lyda W Adams

Contact

Mary Mixner
407-841-1310
or
Tom Ard
407-896-9224



to send thinking of you cards to those who are ill and sympathy cards to members' or families.

COMMUNITY SERVICE

Volunteers — Check your calendar. Add up those hours of service activities and fill out the report form. Have you turned in numbers from the summer months?

There are so many volunteer opportunities in Central Florida. If you haven't yet found your niche or want to add another activity to your schedule, here are some places where your teacher's skills are needed:

1. Orange County Regional History Center is in need of docents. Contact: Lindsey Langdon 407-836-8376
2. A Gift for Teaching supply store on Corinne Dr. 407-897-3612
3. BETA Center on Lk Underhill Dr. 407-277-1942
4. Leu Gardens 407-246-2620

Community Service Volunteer Report

Your volunteer hours are an expression of your dedication to others. Thank You.

Name: _____
Month: _____

Church _____
Civic/Community: _____
Ecology/Environment: _____
Hospital/Hospice/Private: _____
Personal Help: _____
Schools: _____
OCREA: _____
FREA: _____
Misc. (List Activity) _____

Total hours _____

of hours from the above **total** that benefited young people: _____

OUT OF TOWN?

This form is available on our website for you to fill out, print and send to

Arleen Stalnaker

Plan to join our group in several of the adventures we have planned for this Fall :

October 28 - Starlight Dinner Theater
 Saturday Matinee
 "Singing in the Rain"
 \$39.00 includes tax and tip

Dec. 8 & 9 - Fri. and Sat. St. Augustine Christmas Holiday
 Tour -- visit historic homes decorated for the holidays. Trolley tour through the city embellished with white lights. Overnight at Holiday Inn on the Beach; includes buffet dinner , round-trip transportation on motor coach, tour guide, baggage handling, taxes and gratuities. Time for shopping Saturday morning.
 \$189. double, \$249. single.

Looking forward, join us in an **ALASKAN CRUISE!**
 12 Days, land tour and cruise combined, cruising with the Princess Diamond. Includes Denali and Mt. McKinley. Air Fare included in the prices ranging from \$3,000. to \$3,500. depending on cabin selection.
 ***\$150. deposit needed ASAP to reserve cabins. Refundable in full until January. Best cabins that have been reserved for us are going fast!

Please contact Allyson Pollard at (407) 282-9787 for more information on any of the above excursions. I'll have more detailed information at the meetings, so be sure to come!!

New Members or Members renewing since Yearbook was printed.

- Mrs. Ann Carmine.....
 NOT AVAILABLE ON WEB VERSION
 Orlando , FL. 32836
- Mrs. Shirley D. Corn.....
 NOT AVAILABLE ON WEB VERSION
 Maitland, FL. 32751
- Ms. Martha A. Florey.....
 NOT AVAILABLE ON WEB VERSION
 Apopka, FL. 32703
- Mrs. Cheryl M. Harkey.....
 NOT AVAILABLE ON WEB VERSION
 Longwood, FL. 32750-2747
- Mrs. Walker Mae Lock.....
 NOT AVAILABLE ON WEB VERSION
 Orlando, FL. 32809-4502
- Mrs. Barbara Smith.....
 NOT AVAILABLE ON WEB VERSION
 Longwood, FL. 32779

Address Changes: New Address follows:

- Mr. J. Richard Chapman
 NOT AVAILABLE ON WEB VERSION
 Orange Park, FL. 32003-7779
- Patricia Halstead
 NOT AVAILABLE ON WEB VERSION
 Murphy, NC 28906
- Mrs. Charlotte G. Harman
 NOT AVAILABLE ON WEB VERSION
 Holly Hill, FL. 32117-2535
- Peggy L. Kirby
 NOT AVAILABLE ON WEB VERSION
 Taylors, SC 29687-5769

SPECIAL PROJECT

Please bring any children or adult books for KATRINA victims on the Gulf Coast in Mississippi to our October Meeting!



Other Corrections.

- Tom Ard e-mail address is NOT AVAILABLE ON WEB VERSION
- Penny Parrish e-mail address is: NOT AVAILABLE ON WEB VERSION
- Shirley Pettit Address is NOT AVAILABLE ON WEB VERSION
- Andrea Rogers, Correct phone number is NOT AVAILABLE ON WEB VERSION
- Betty and Wayne Trawick, Correct phone number is: NOT AVAILABLE ON WEB VERSION

ORLANDO OPERA GUILD

2006 DESIGNER SHOWHOUSE

The Orlando Opera Guild is seeking volunteers to serve as hostesses in the designer decorated rooms of the 2006 Show House.

The house is an historic home on Lake Ivanhoe in College Park at 1521 West Ivanhoe Boulevard in Orlando.

The event will be open to the public from October 21 through November 12. Hours are Monday through Saturday from 10:00 am to 3:30 pm and on Thursday evenings from 5:00 pm to 8:00 pm. Sunday hours are noon to 5:00 p.m.

Volunteers are asked to serve a 3 hour shift on weekdays or a 5 hour shift on Sundays. All volunteers will receive a ticket to enjoy the event at their leisure.

Shift hours are:

Mondays – Saturdays

Morning – 9:30 – 12:30

Afternoon – 12:30 – 4:00

Thursday evening - 5:00 – 8:00 pm*

Sunday – noon – 5:00 pm

Contact Merrie Lucas at
407-466-8782 or by e-mail
at mlcas5@cfl.rr.com.

HOSPITALITY FOR OCTOBER MEETING

Our hosts for the October meeting will be members with last names beginning with A-C. They will bring a refreshment to share with our members at the Oct 5th general meeting. Please have your goodies at the meeting by 10:00 AM.



Door greeters for the September meeting will be Jim Boston & Arleen Stalnaker.

A centerpiece will be provided for us by Maria Alvarez .

Maria Alvarez, Hilda Ayers, Carol Egolf, Mary Long, Sue Orth, Elaine Pennington, Elaine Sloan, Wilhelmina Unkefer, Fran Winesett have signed up to bring goodies for the Ronald McDonald House.

Thought for the Day -- Frank Johnson

By the Numbers - September 2006

Members—351

General Meeting Attendance —74

Web Site hits -125 in August - 499 since it went on line

NON-PROFIT ORG.
U.S. POSTAGE
PAID
Permit #494
Orlando, FL

ORANGE COUNTY RETIRED EDUCATORS ASSOCIATION
P.O. BOX 677325
Orlando, FL 32867-7325
Address Service Requested