



# The Retired Educator



Volume XII

April 2010

Issue 7

## THE RETIRED EDUCATOR

Published By

Orange County Retired  
Educators Association  
P.O.Box 677325  
Orlando, Florida 32867

President  
Sue Orth

Vice-President  
Margie Wells

Recording Secretary  
Shirley Pettit

Corresponding Secretary  
Eleanor Kenyon

Treasurer  
Robert Ford

Editorial Team  
Mildred Dunlap  
&  
Sue Orth

Visit us on the web  
at  
[www.ocrea-fl.org](http://www.ocrea-fl.org)

## Contact

**Tom Ard**  
**407-896-9224**

to send thinking  
of you cards to those  
who are ill  
or sympathy cards to  
members or their  
families.



## PRESIDENT'S CORNER

At our March meeting we were treated to displays of members handicrafts and hobbies. From needlepoint to shadow boxes OCREA is a talented group.

The new president of Ten Thousand Villages shared information about fair trade and some of the beautiful baskets, jewelry and toys they have in their store on Park Avenue. If you get the chance stop by and tell them you heard about them from OCREA.

Judy Thames, an AARP volunteer stopped by to tell us about the upcoming AARP 2010 National Event and EXPO being held in Orlando Sept 30 – Oct 2, 2010. Volunteers are needed. For more information on the event and the volunteer component, check their website at [www.AARP.org/fl](http://www.AARP.org/fl). Toll free number is 866-595-7678 or you can e-mail them at [Orlando50+volunteer@aarp.org](mailto:Orlando50+volunteer@aarp.org).

April promises to bring one of my favorite programs. I love a good story and Charlie from the Orlando Public Library will be here to share his tales. Hope to see you there.

We are coming to the close of another year. You will be receiving your membership renewals by mail. Take the time to make sure your address, phone # and e-mail is correct. Use this time to also check our membership book to make sure it is correct. Now is the time to update your information. Thank you.

*Sue Orth*

---

---

## GENERAL MEMBERSHIP MEETING

**Thursday, April 1, 2010**

College Park United Methodist Church

*(located at corner of Edgewater & Harvard across from Publix)*

**10 a.m. Social Hour**

**10:30 a.m. Program & Business Meeting**

**Program**

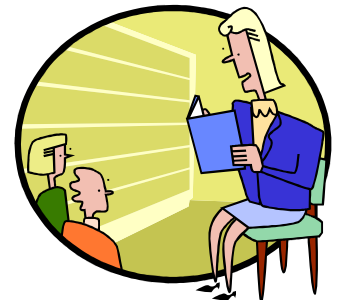
**Storyteller**

## Hosts & Hostesses

Members with last names beginning with T—Z

**PLEASE PLAN TO ATTEND!**

Due to limited parking, please carpool if possible.



## Credit Union News

By Nancy L. Whitecavage

### Bring Spare Change to CFE to Help Haiti

CFE has partnered with the American Red Cross to collect donations toward Haiti relief efforts. A relief fund named, Red Cross Haiti Relief Effort has been set up to receive donations. Thank you to all who have already donated money to help Haiti. We recently had a school teacher donate a baggie full of change that she had collected from her students. If we all give a little change, it can add up to a lot. Haiti will continue to need help rebuilding for some time. CFE Members and non-members can visit any CFE branch location to donate via cash or check<sup>1</sup>. Members may also transfer funds directly from their CFE accounts to the Red Cross Haiti Relief Effort at any branch location or by calling the Member Service Center at 407-896-9411 or 800-771-9411, outside Orlando, option 3. Donation receipts are available<sup>2</sup>. Visit [mycfe.com/promo/jan10/haiti.htm](http://mycfe.com/promo/jan10/haiti.htm) to learn about other charitable organizations and how you can help.

*1CFE cannot accept checks payable to the American Red Cross. However, checks can be accepted for deposit to the special "Red Cross Haiti Relief Effort" account as long as the check is made payable to CFE. 2 Please consult your tax advisor for detailed information on charitable giving.*

### CFE continues to go Green

Annually, CFE mails approximately 792,000 paper account statements. Each member who converts from paper to electronic statements saves .3 pounds of paper, preserves 1 square foot of forest, and cuts CFE's cost by about \$12 a year. Imagine the impact if 87,000 members converted! We would like to encourage our members to choose electronic statements instead of paper. Not only will you help save trees, you'll save money and resources, and guard against identity theft. Stay tuned to [mycfe.com](http://mycfe.com) for upcoming green promotions.

### Use the Pen, Not the PIN

Thank you to all who have already chosen the [mycfe4schools](http://mycfe4schools) debit card, the card that pays cash to schools at no cost to you. We have already raised hundreds of dollars for Central Florida schools, but we'd like to raise more. Remember to sign for purchases choosing the "credit" option rather than using your PIN. It costs CFE less when you choose "credit" and sign. (The purchase will be debited from your checking account.) That is how we are able to donate the extra savings to schools. If you haven't already upgraded your debit card to the [mycfe4schools](http://mycfe4schools) debit card, visit [mycfe.com/myCFE4Schools](http://mycfe.com/myCFE4Schools) to learn more and to get your card today.

### Upcoming CFE Events

#### Free Community Shred and e-Recycle Day:

April 17, 2010, at the Forest City Branch from 9:00 a.m. to 2:00 p.m. Free document shredding, electronic recycling, refreshments and fun will all be offered.

#### CFE's Annual Meeting

Tuesday, April 6 at 7:00 p.m. at CFE's Lake Mary Operations Facility

Visit [mycfe.com](http://mycfe.com) for details on CFE promotions and events

## Literacy News



Here we are in April, 2010. This begins a new year for collection of Literacy hours. Now is the time for renewed effort in the literacy field. So get yourselves together and start to participate in a very worthwhile endeavor.

Also, don't forget to continue to bring in a book at the general meeting, sign the sheet, and you receive one hour of credit. So easy, anyone can do it.

Henrietta Sebag

### LITERACY HOURS

**Record your hours on the form below and bring it to the next meeting, report them to the phone tree callers or mail to**

**Henrietta Sebag**

**Check your yearbook for address**

Name \_\_\_\_\_

Month(s) \_\_\_\_\_

Tutoring \_\_\_\_\_

Libraries \_\_\_\_\_

Schools \_\_\_\_\_

Miscellaneous \_\_\_\_\_

# of hours from the above **total** that benefited young people: \_\_\_\_\_

### Special Projects

February's **PET FOOD** project was a tremendous success. Thank you, thank you says the SPCA of Central Florida. Also from the citizens on Meals on Wheels whose companions' tails are all "wiggledy-waggledy" about it.

### ADULT LITERACY LEAGUE

**A.L.L.** held a reception for volunteers on Feb. 10. Esther Myers was honored with a special video tribute for her 42 years of service; Esther was in at the founding of A.L.L. Other OCREA members were present and recognized: Patricia Johnson, Fleur de Lys Healy, and Carol Egolf. Carmen Richards, from Osceola County REA, also received a certificate and even won a door prize. Congratulations to all OCREA members who volunteer through the Adult Literacy League.

Carol Egolf .

### In Memoriam

Carolyn S. Powers

**HOSPITALITY FOR APRIL MEETING**



Our hosts for the April meeting will be members with last names beginning with T-Z. They will bring a refreshment to share with our members at the April 1st general meeting. Please have your goodies at the meeting by 10:00 AM.

Greeting us at the door will be Chris Couch and Lola Ferguson.

A centerpiece will be provided for us by Julia Greene

Tom Ard, Chris Couch, Carol Egolf, Joan Gates, Blanca Hernandez, Mary Long,, Pam Smith, Fran Winesett have signed up to bring goodies for the **Ronald McDonald House**.

Thought for the Day -- Mae Lock.

**COMMUNITY SERVICE**

**Arleen Stalaker, Chairperson**

The online Create the Good community is full of ideas from people committed to making their community a better place. It offers you a variety of ways to help others - on your terms, in your time. Check out [www.create-the-good.org](http://www.create-the-good.org) for complete information. We have 60 OCREA members who have contributed over 7,000 hours toward making our community a better place.

**COMMUNITY SERVICE**

**Volunteer Report**

**Volunteer hours may be reported to the phone tree callers, recorded on the form below and brought to the next meeting or mailed to**

**Arleen Stalaker**

**Check your yearbook for address**

**Name:** \_\_\_\_\_

**Month:** \_\_\_\_\_

Church \_\_\_\_\_

Civic/Community: \_\_\_\_\_

Ecology/Environment: \_\_\_\_\_

Hospital/Hospice/Private: \_\_\_\_\_

Personal Help: \_\_\_\_\_

Schools: \_\_\_\_\_

OCREA: \_\_\_\_\_

FREA: \_\_\_\_\_

Misc. (List Activity) \_\_\_\_\_

**Total hours** \_\_\_\_\_

# of hours from the above **total** that benefited young people: \_\_\_\_\_

**“Volunteers don’t get paid, not because they’re worthless, but because they’re priceless.”**

**- Sherry Anderson**

**Information and Protective Services**

**Phyllis Tacey, Chairperson**

**BEWARE OF MAIL SCAMS  
MASQUERADING AS THE 2010 CENSUS**

Beware of mail scams impersonating the census in an attempt to get personal information.

The official census does not ask for Social Security numbers, bank -account numbers or financial information.

There are no questions on the 2010 census about how much money you earn, how you get that money, or what you spend that money on.

There are no questions that ask if you are an American citizen.

If you have questions about the authenticity of the questionnaire, or you need help filling out the form, you can call 1-866-872-6868.

To learn everything you’ve ever wanted to know about the 2010 census, go to [2010.census.gov](http://2010.census.gov).

On March 15, the U.S, Census Bureau will mail out questionnaires to 130 million households, to be filled out and mailed back by April 1- Census Day.

**New Members:**

Mrs. Judith D. Charles.....407-629-1297  
2265 Middleton Avenue  
Winter Park, FL. 32792-4744

Mr. Edward C. Levine.....407-679-3118  
2483 Tahoe Circle  
Winter Park, FL. 32792



# **FREA Extravaganza**

The Extravaganza is back. Each year the FREF must generate a fund raiser for our scholarship program and we are continuing our Extravaganza. The theme of the FREA State Assembly in May is technology and with that in mind, our prizes will be technology oriented. The Grand Prize will be a 17" Dell laptop computer with 4 GB memory and 500 GB hard drive. It comes with Windows 7 Premium. The First Prize will be a Kindle, an electronic reader. The Kindle is global and wireless. It can hold up to 1500 books, change the size of the font, and download a book in 60 seconds for \$9.99 or less. You can preview a book for free. The Second Prize will be a Garmin GPS that covers all of North America and announces street names in its guidance. The Third Prize will be a Toshiba 19" HDTV with a built in DVD player. Donation tickets are \$10.00 and can be purchased from Chris Couch. Your \$10.00 donation ticket is tax deductible and money from this Extravaganza will be used for scholarships. FREF will spend approximately \$37,000 next year for scholarships and one of them is being used by a student from Orange County.

Your help and support is greatly needed and appreciated. The cause is worthy and the prizes are great. Do see Chris at our coming events and picket up your ticket. You don't have to be present to win but you can't win if you don't buy a ticket. Remember, your donation ticket is tax deductible.

*Ellen James, FREF Trustee*

---

## **MEMBERSHIP RENEWALS**

During April current OCREA members will be receiving their renewal notice for the 2010-11 year. They may bring their dues to the April or May meeting, or mail the check in the enclosed envelop. Even though the membership year does not end until June 30, dues must be collected several weeks in advance so the paperwork can be processed properly. Bob and Ruth Ford appreciate you paying as soon as possible.

Orlando, FL  
Permit #494  
PAID  
U.S. POSTAGE  
NON-PROFIT ORG.

---

ORANGE COUNTY RETIRED EDUCATORS ASSOCIATION  
P.O. BOX 677325  
Orlando, FL 32867-7325  
Address Service Requested